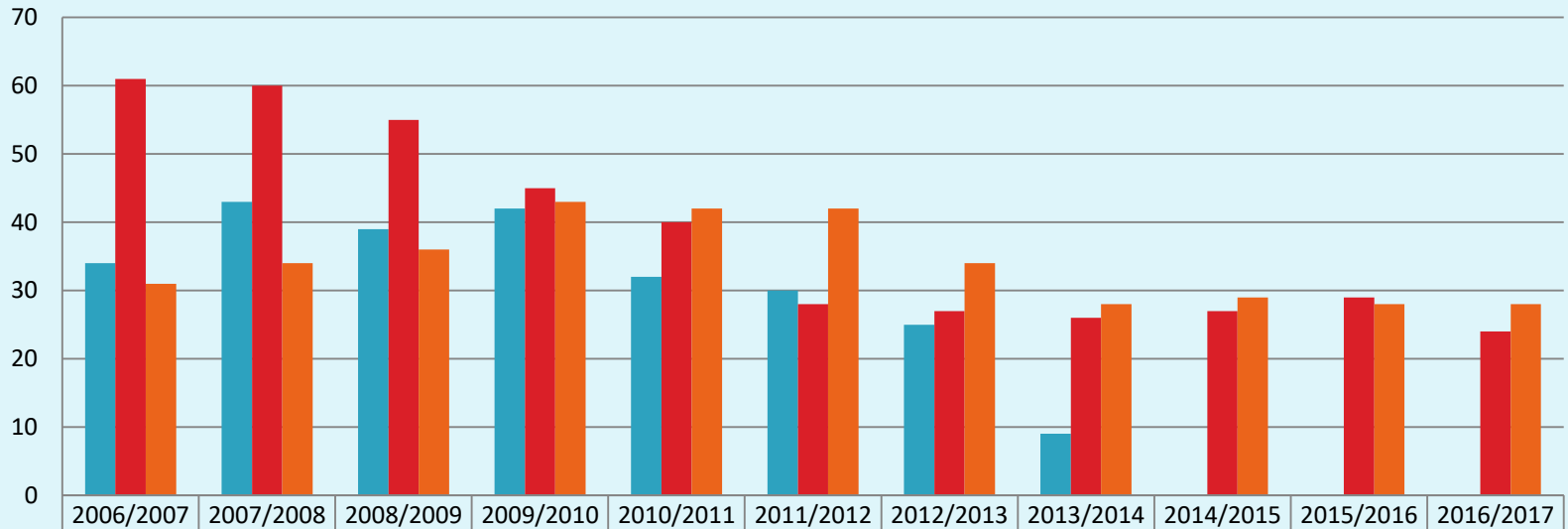




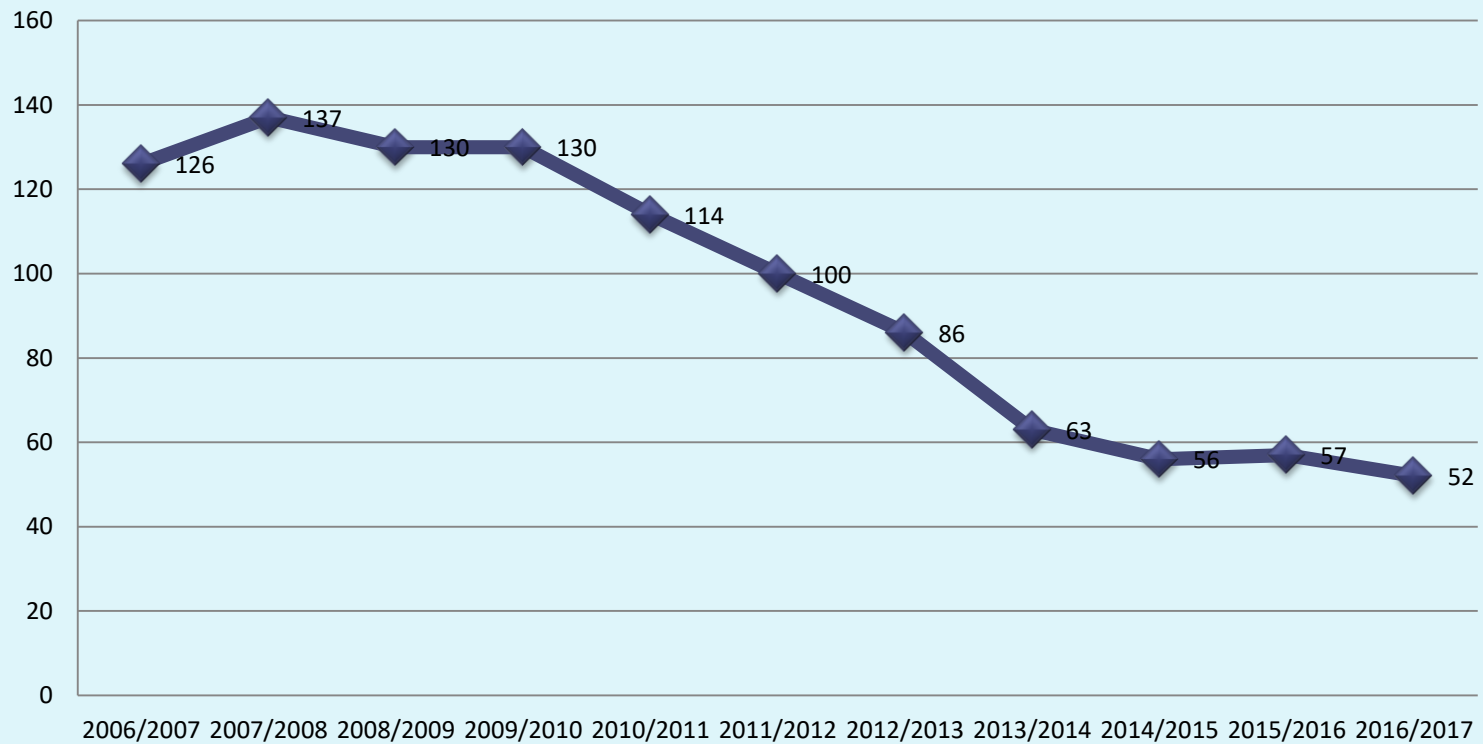
FREGUESIA DE VERMOIL
Balanço - Educação
2005/2006 – 2016/2017

Nº de alunos no 1º CEB

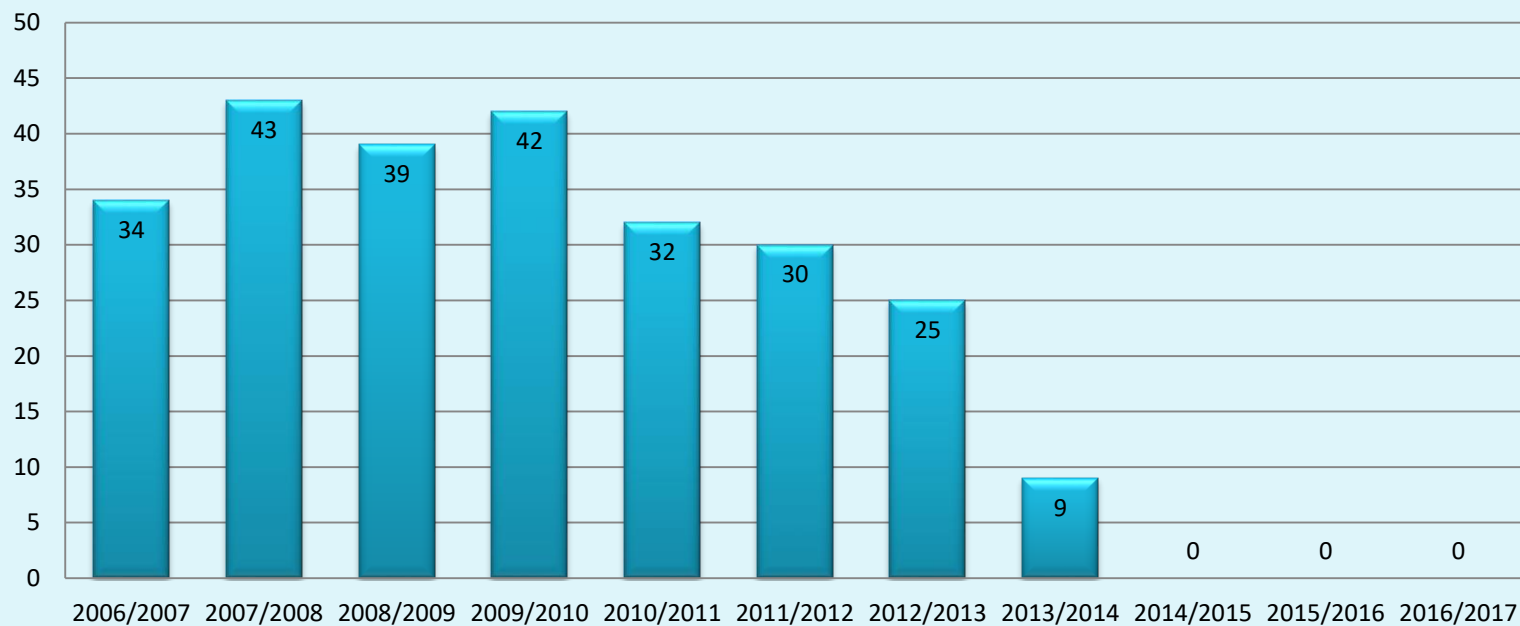


	2006/2007	2007/2008	2008/2009	2009/2010	2010/2011	2011/2012	2012/2013	2013/2014	2014/2015	2015/2016	2016/2017
■ Matos da Ranha	34	43	39	42	32	30	25	9	0	0	0
■ Outeiro da Ranha	61	60	55	45	40	28	27	26	27	29	24
■ Vermoil	31	34	36	43	42	42	34	28	29	28	28

Nº total de alunos no 1º CEB

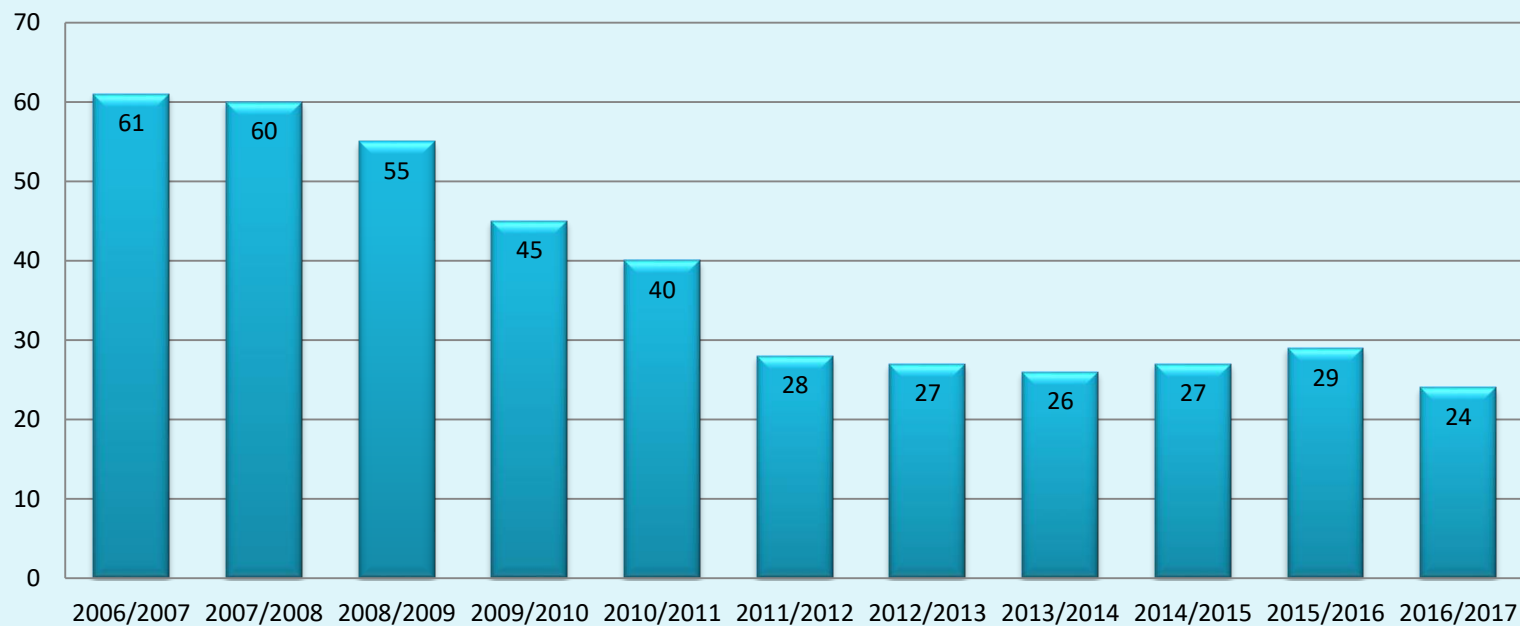


Nº de alunos no 1º CEB Matos da Ranha



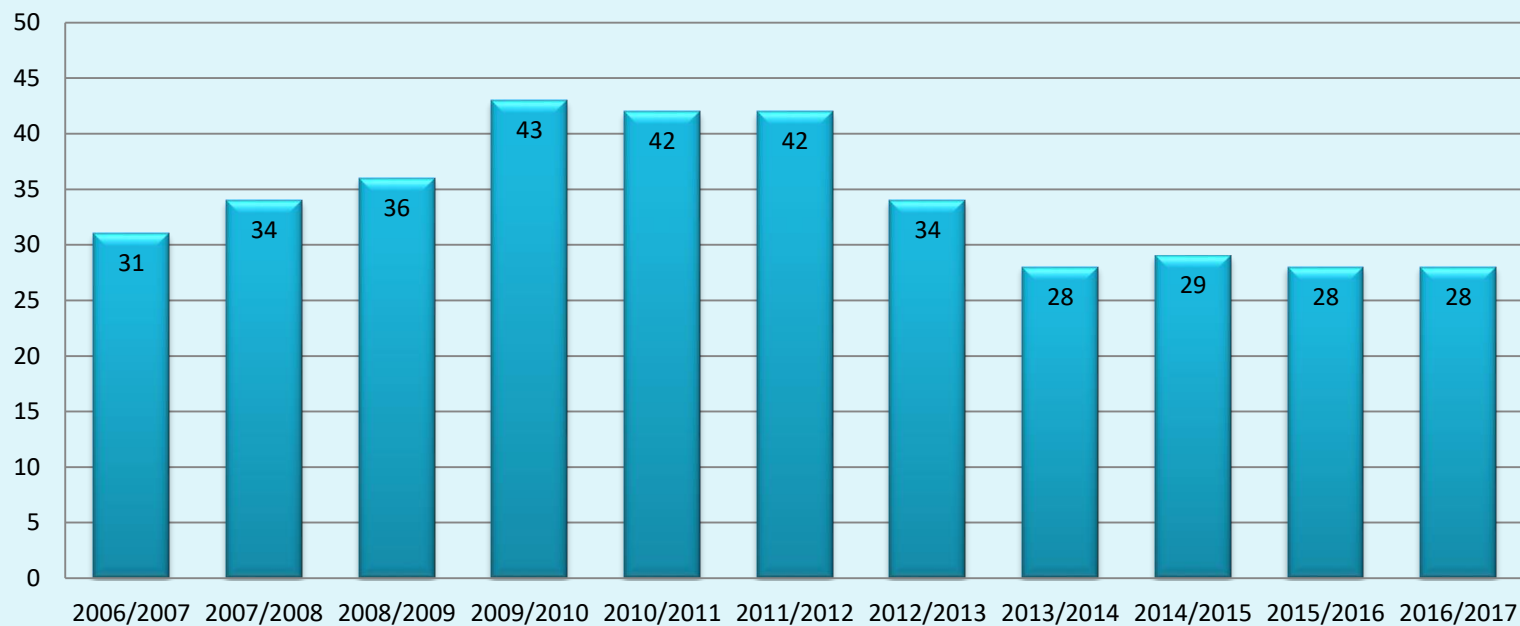
Nº de alunos no 1º CEB

Outeiro da Ranha

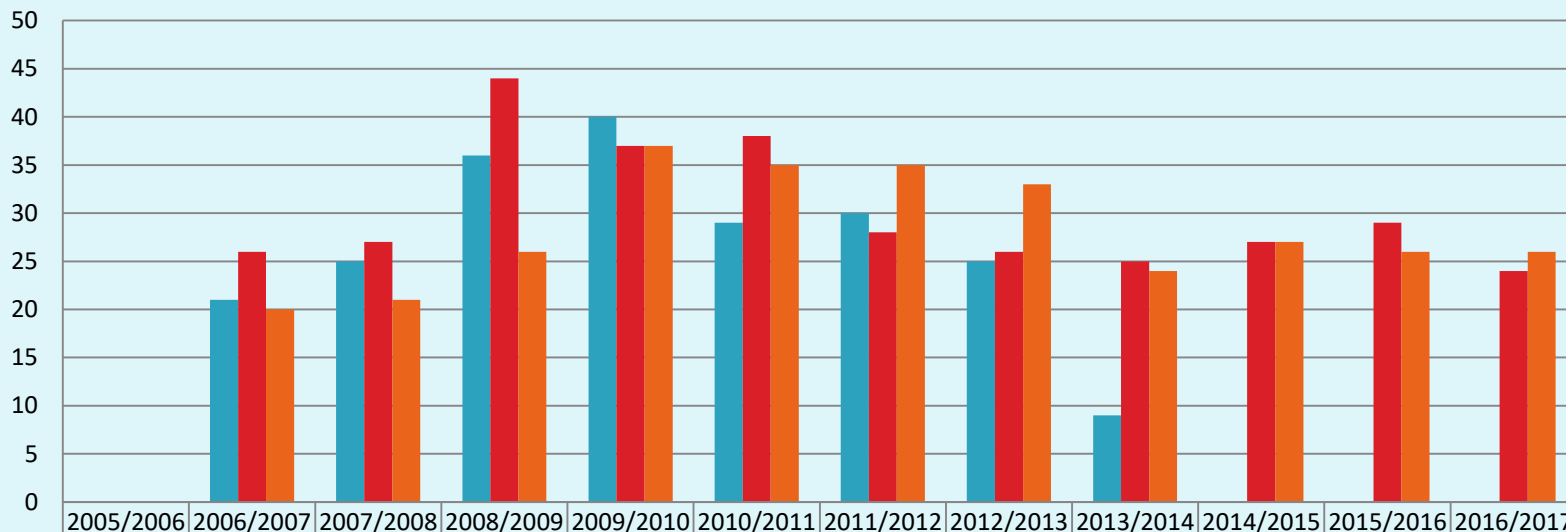


Nº de alunos no 1º CEB

Vermoil

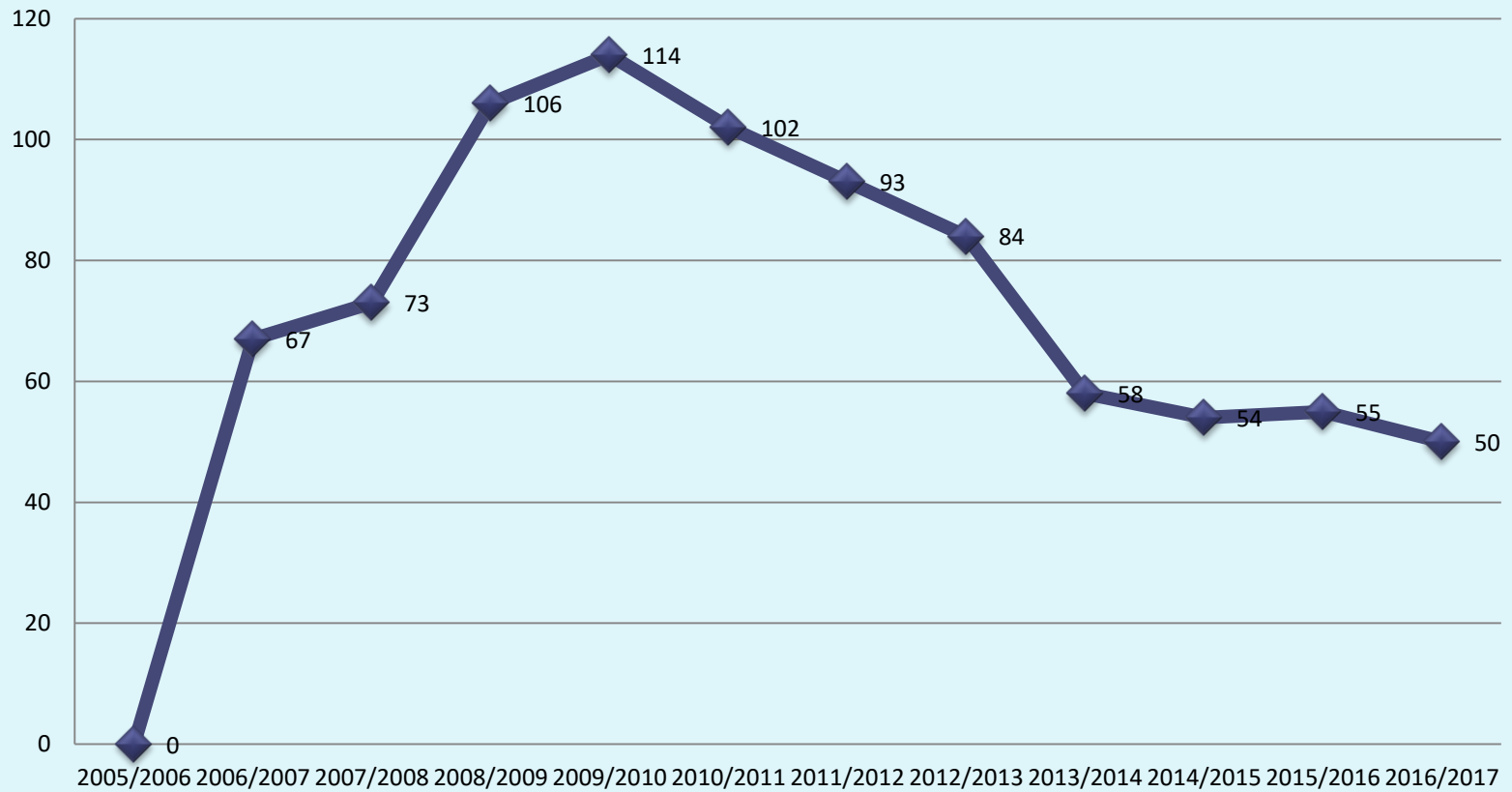


1º Ciclo - Refeições

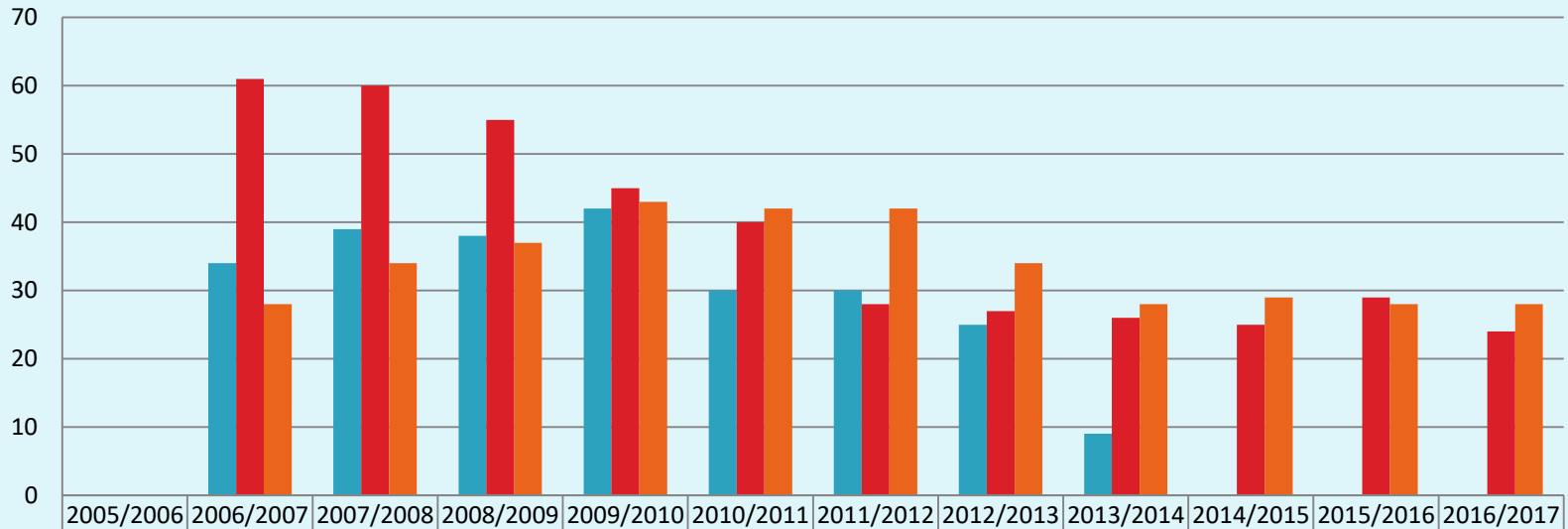


	2005/2006	2006/2007	2007/2008	2008/2009	2009/2010	2010/2011	2011/2012	2012/2013	2013/2014	2014/2015	2015/2016	2016/2017
Matos da Ranha	0	21	25	36	40	29	30	25	9	0	0	0
Outeiro da Ranha	0	26	27	44	37	38	28	26	25	27	29	24
Vermoil	0	20	21	26	37	35	35	33	24	27	26	26

1º Ciclo - Refeições

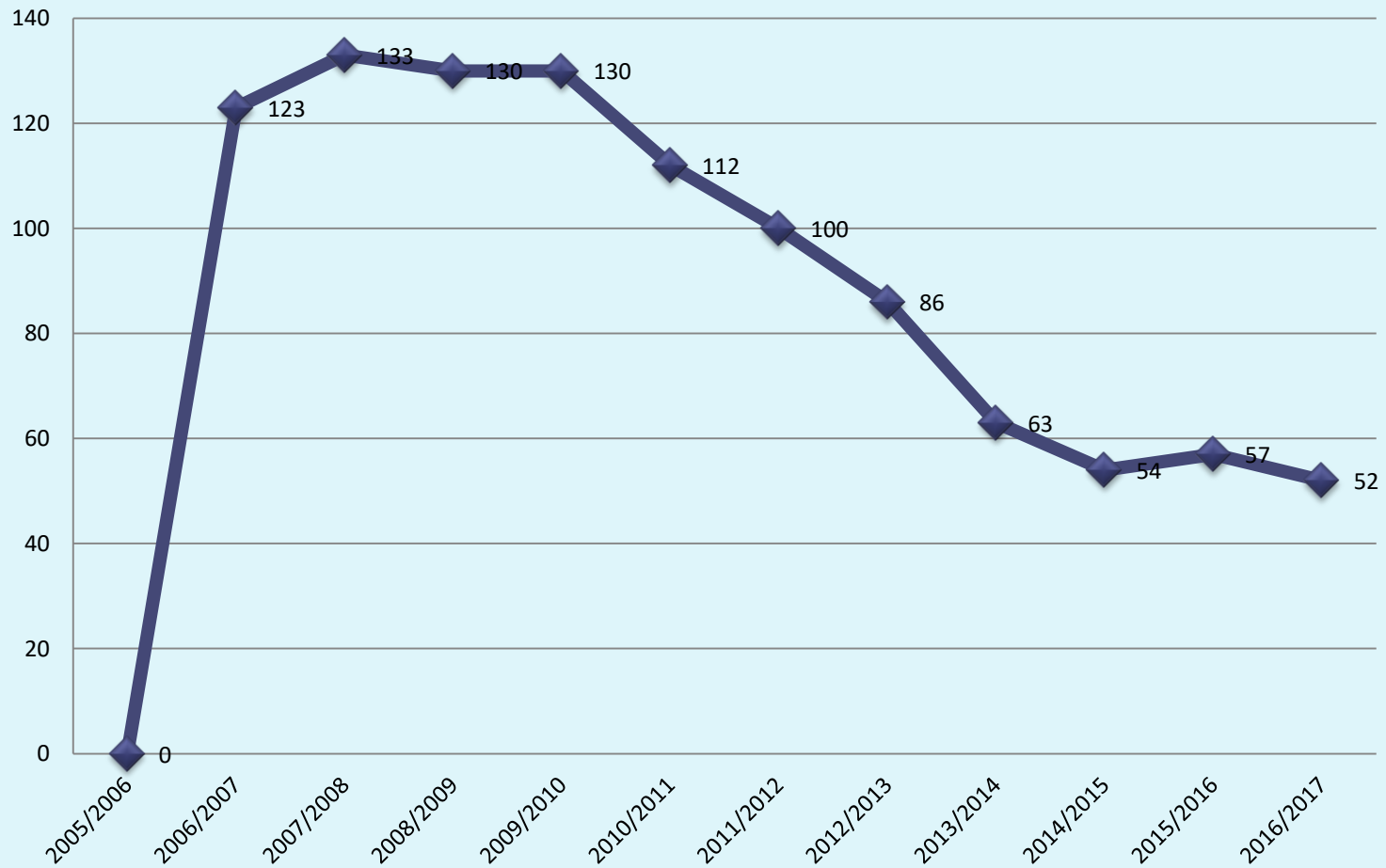


1º Ciclo – AEC's

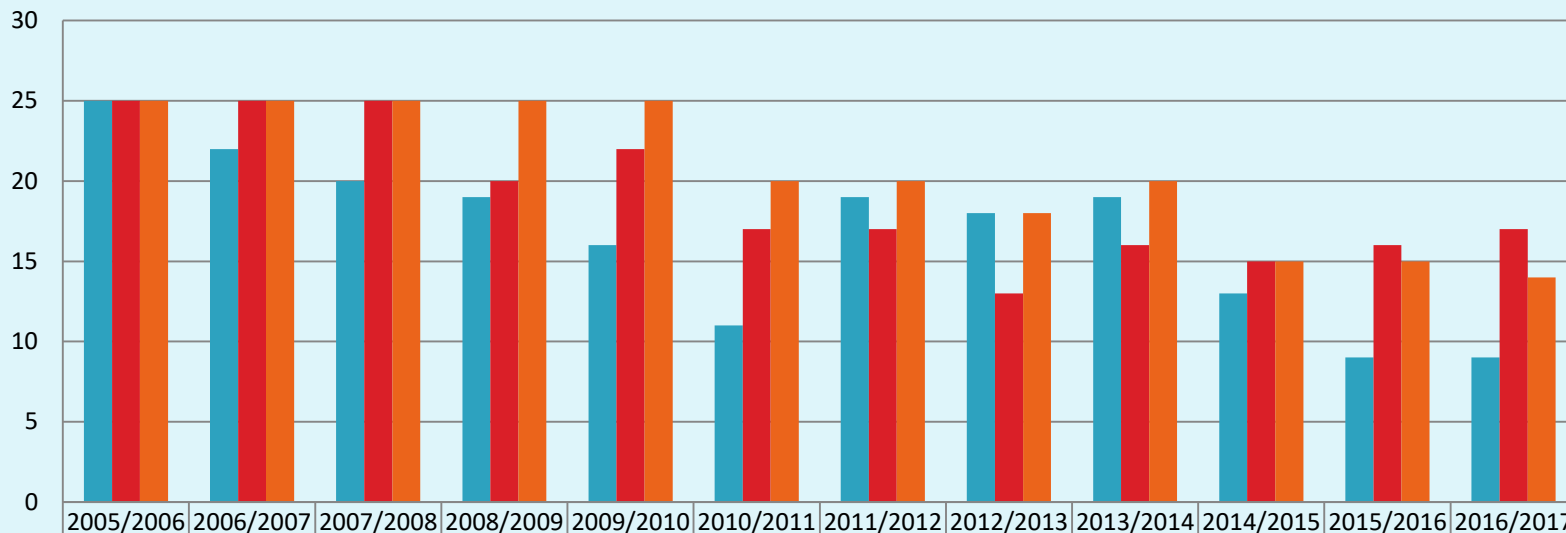


■ Matos da Ranha	0	34	39	38	42	30	30	25	9	0	0	0
■ Outeiro da Ranha	0	61	60	55	45	40	28	27	26	25	29	24
■ Vermoil	0	28	34	37	43	42	42	34	28	29	28	28

1º Ciclo – AEC's

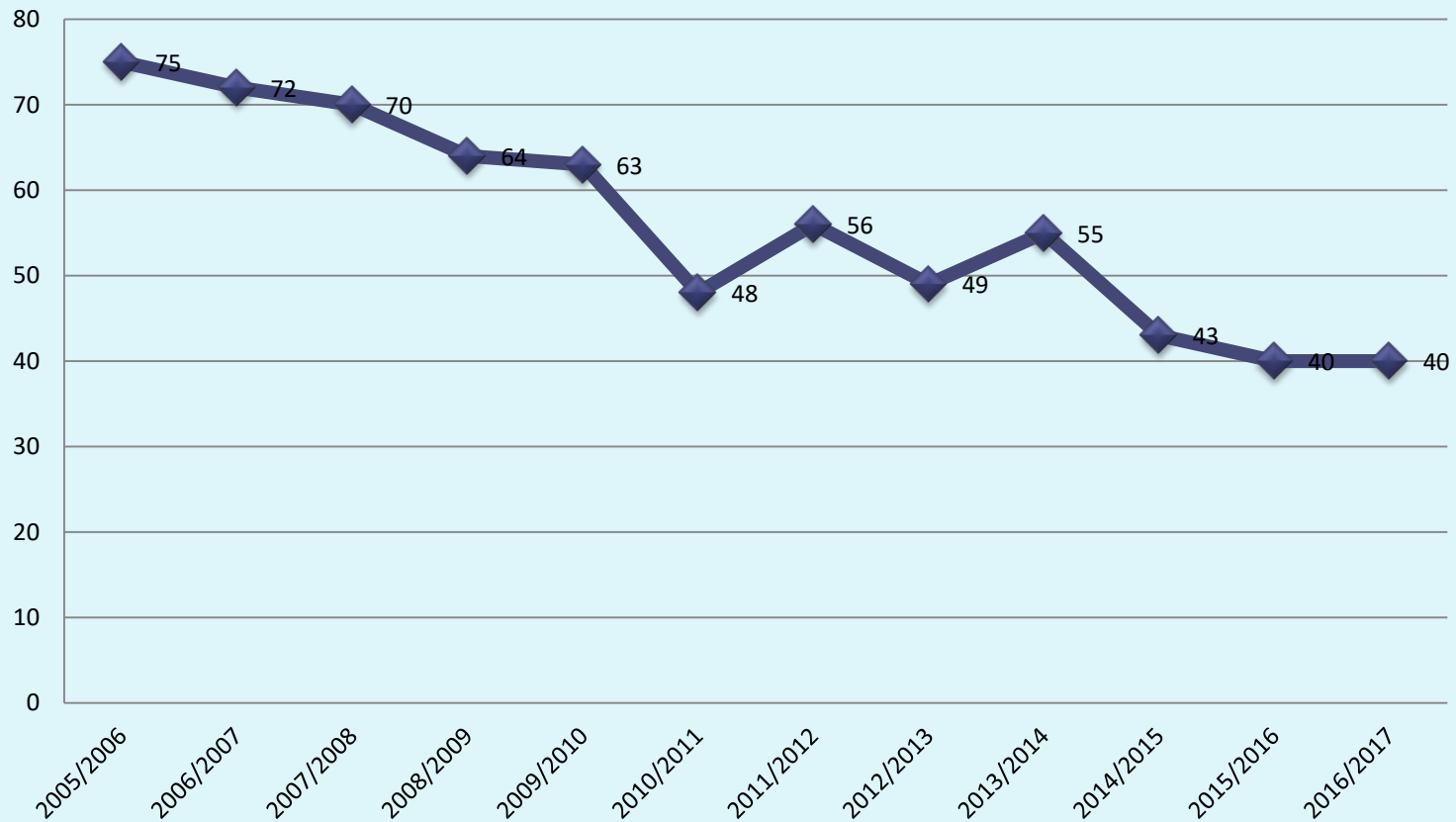


N.º de Alunos no Pré-Escolar

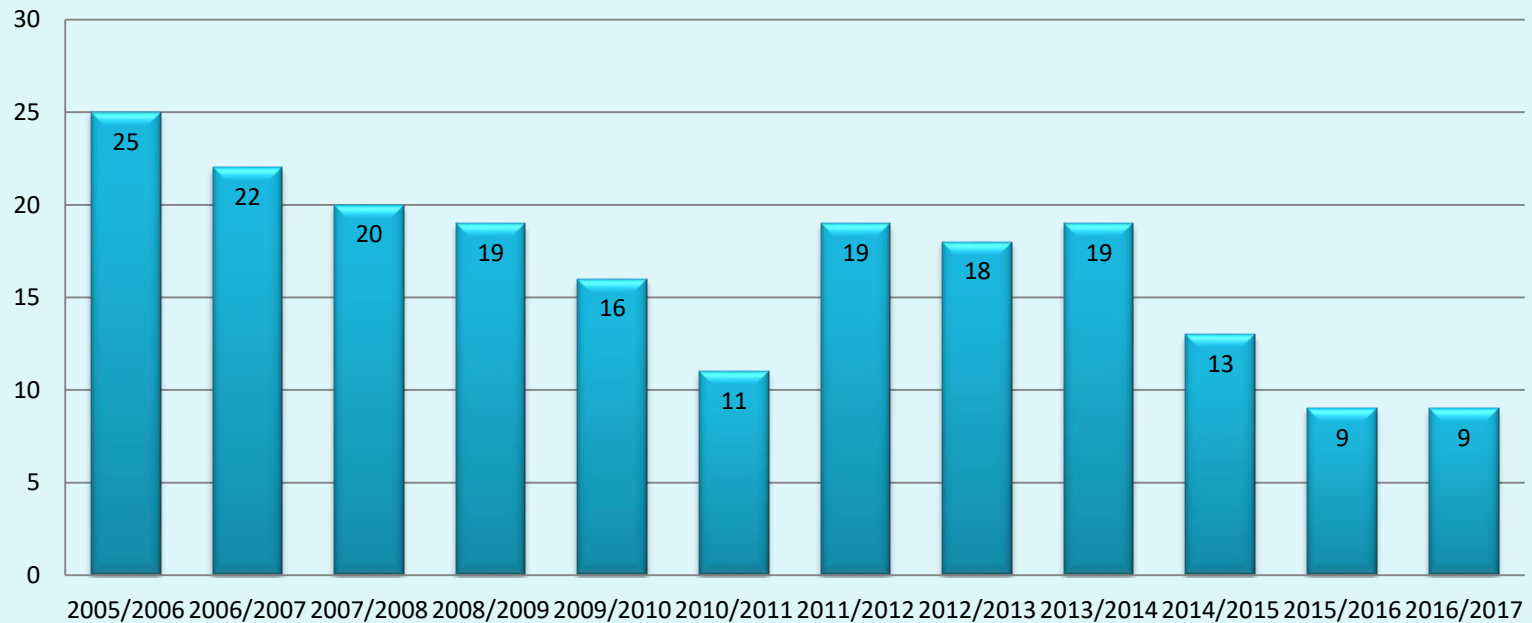


■ Matos da Ranha	25	22	20	19	16	11	19	18	19	13	9	9
■ Outeiro da Ranha	25	25	25	20	22	17	17	13	16	15	16	17
■ Vermoil	25	25	25	25	25	20	20	18	20	15	15	14

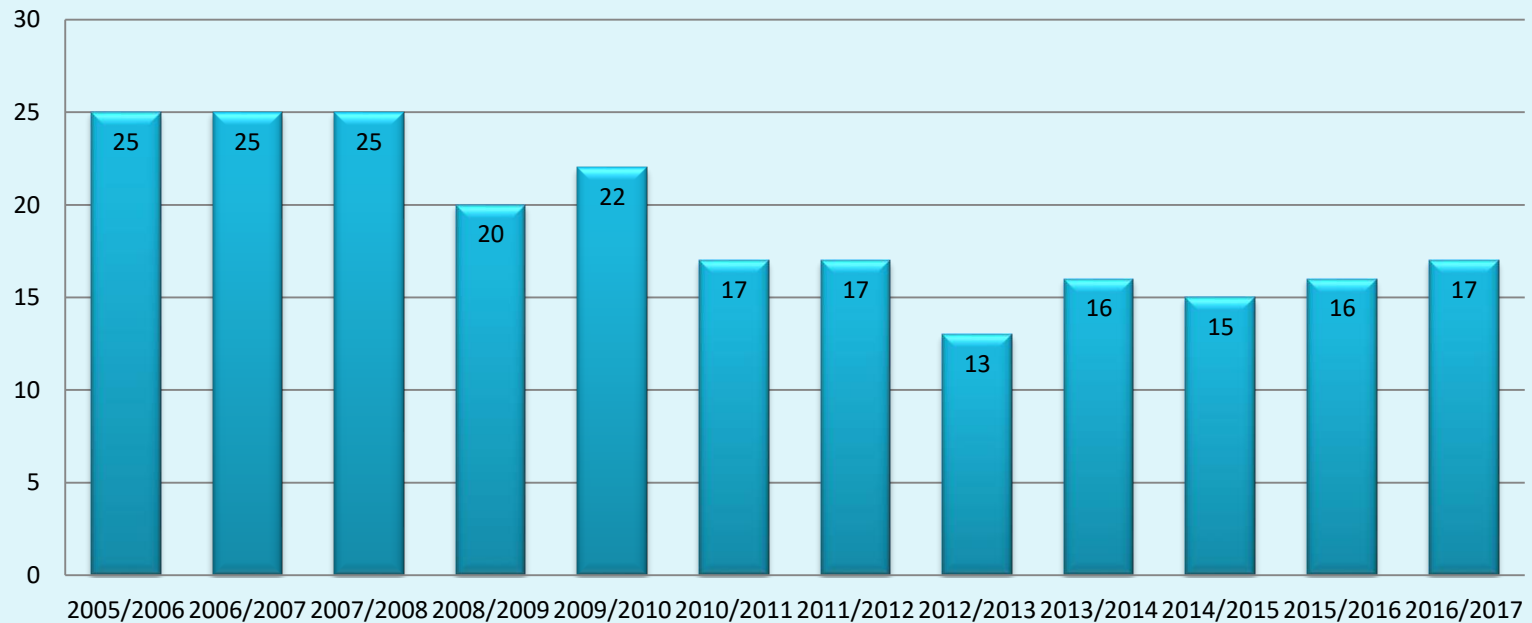
N.º de Alunos no Pré-Escolar



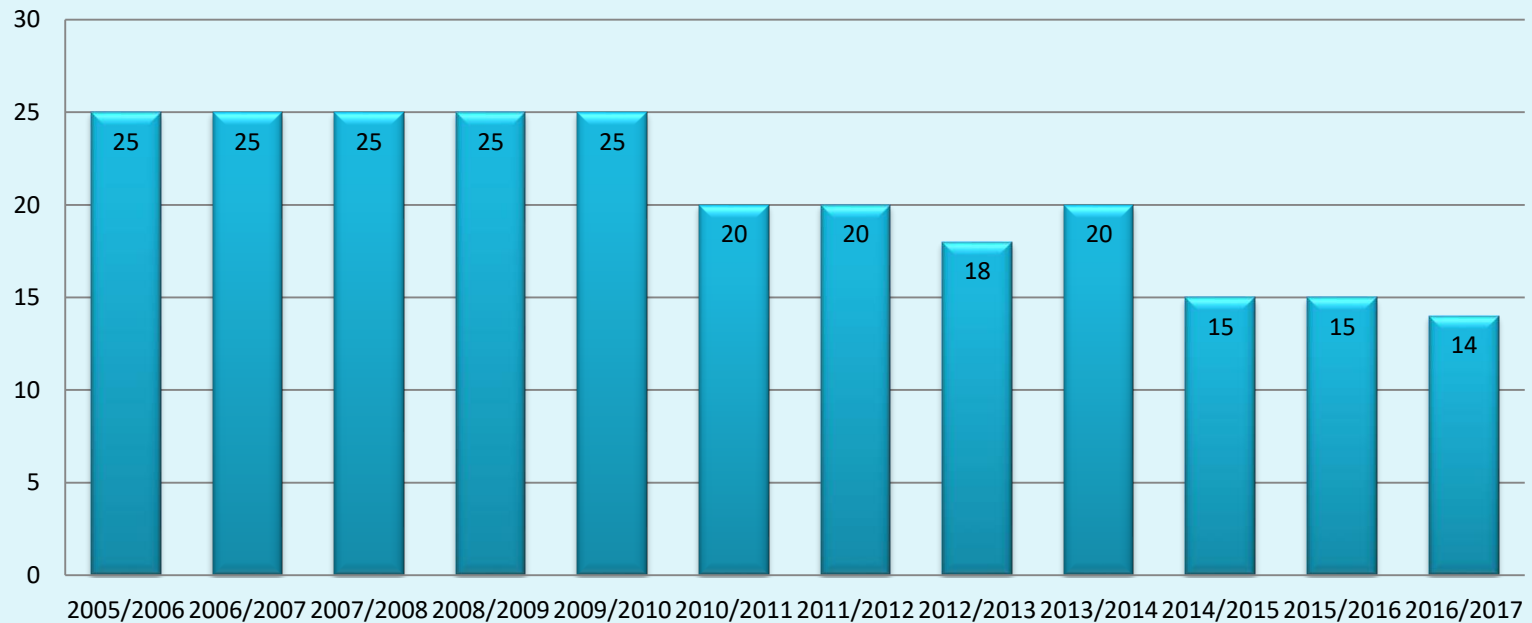
N.º de Alunos no Pré-Escolar Matos da Ranha



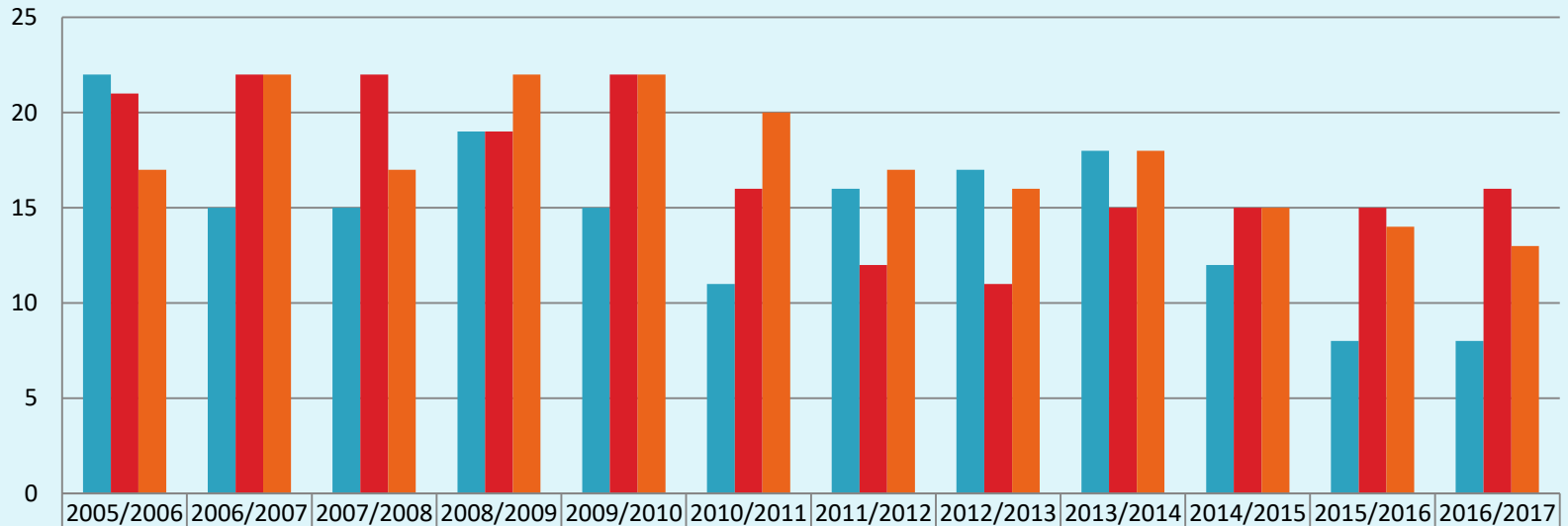
N.º de Alunos no Pré-Escolar Outeiro da Ranha



N.º de Alunos no Pré-Escolar Vermoil

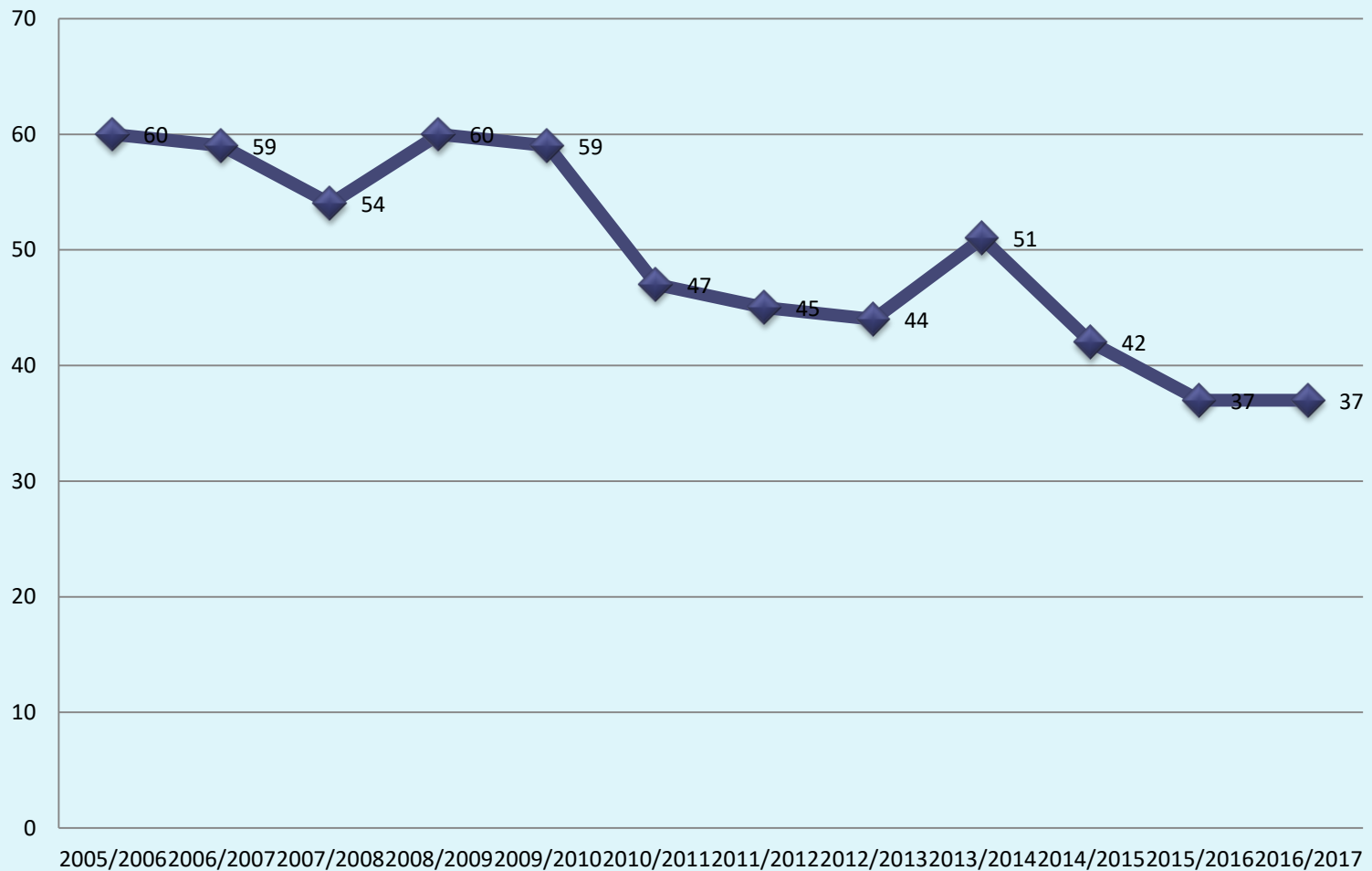


Pré-Escolar Refeições



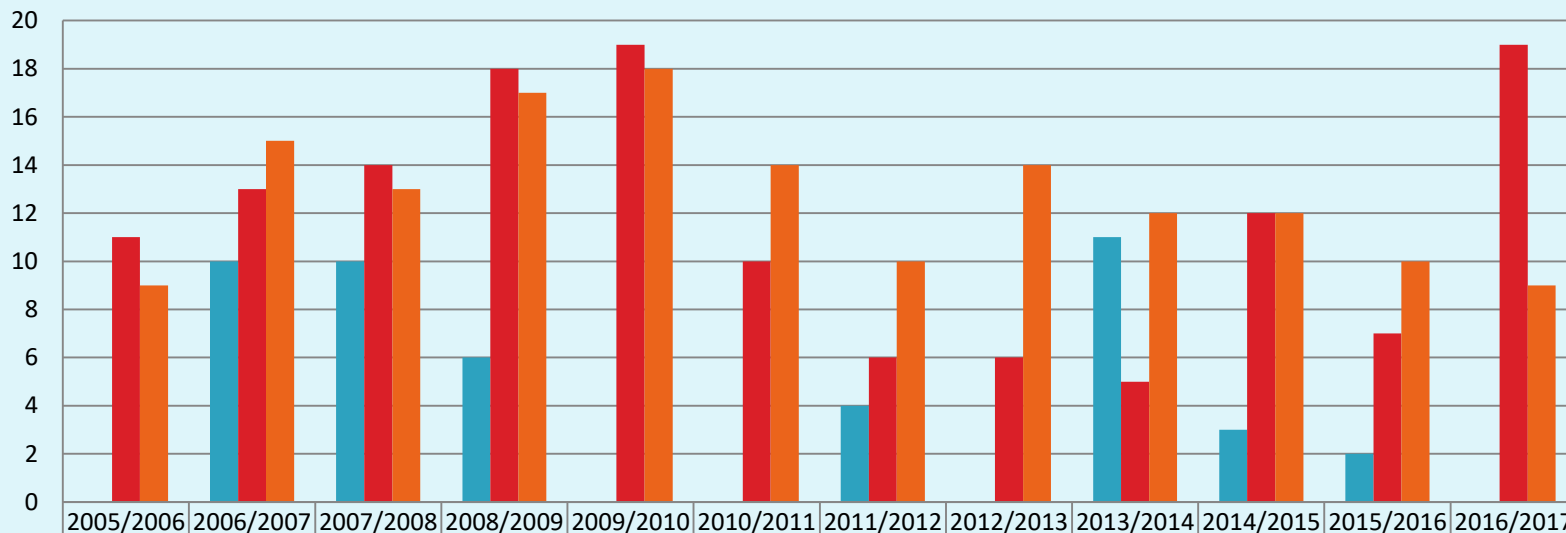
■ Matos da Ranha	22	15	15	19	15	11	16	17	18	12	8	8
■ Outeiro da Ranha	21	22	22	19	22	16	12	11	15	15	15	16
■ Vermoil	17	22	17	22	22	20	17	16	18	15	14	13

Pré-Escolar Refeições



Pré-Escolar

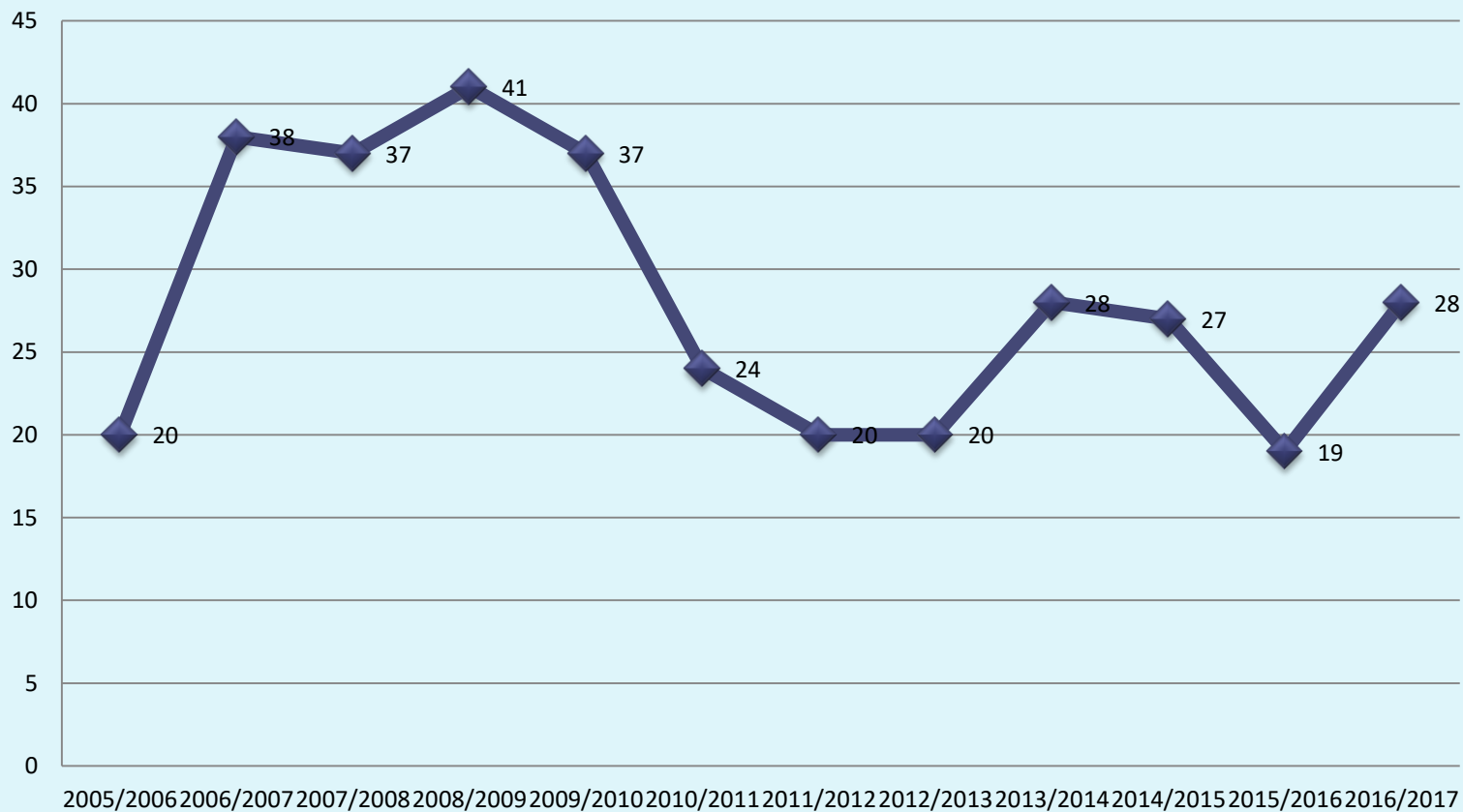
Prolongamento de Horário



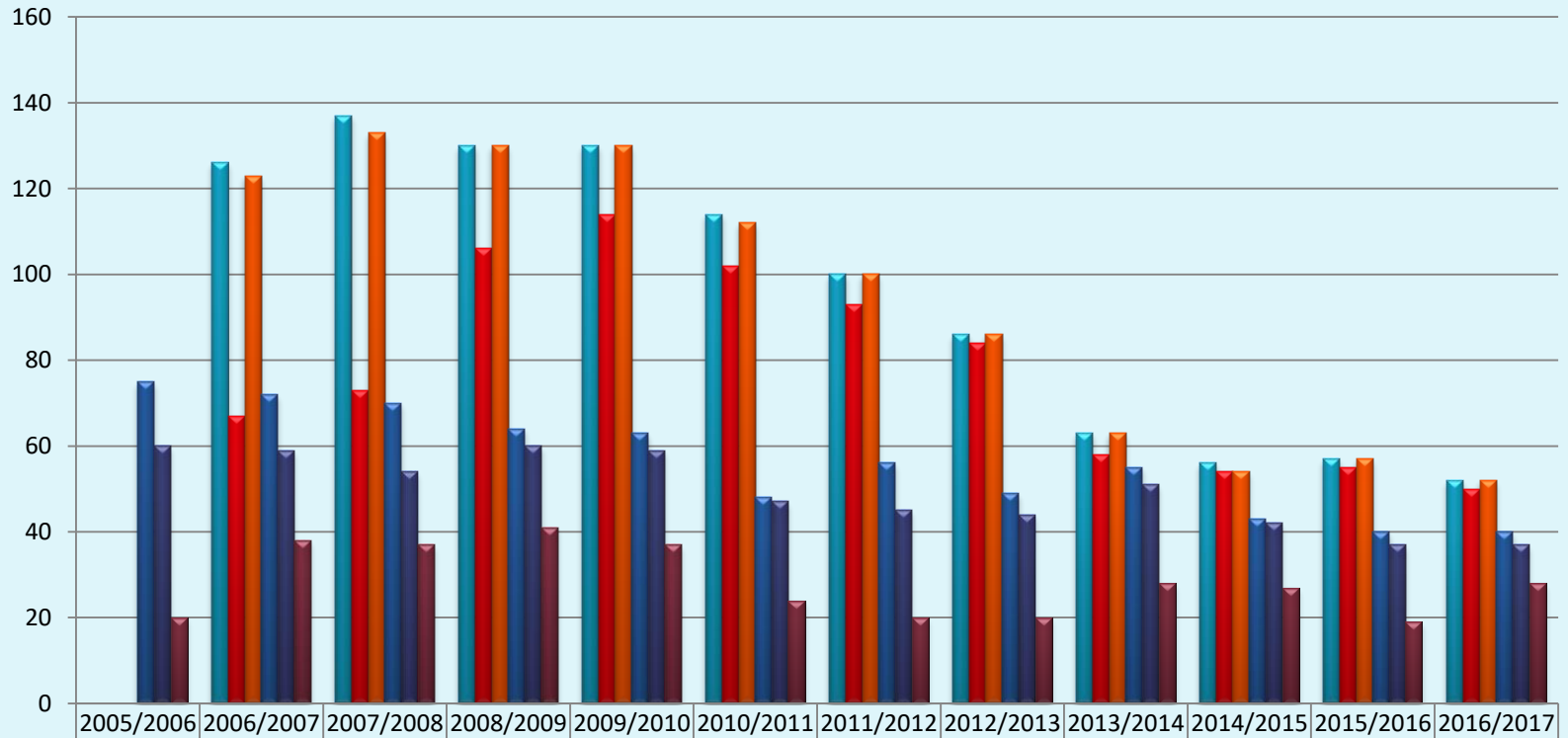
■ Matos da Ranha	0	10	10	6	0	0	4	0	11	3	2	0
■ Outeiro da Ranha	11	13	14	18	19	10	6	6	5	12	7	19
■ Vermoil	9	15	13	17	18	14	10	14	12	12	10	9

Pré-Escolar

Prolongamento de Horário



Balanço Total



	2005/2006	2006/2007	2007/2008	2008/2009	2009/2010	2010/2011	2011/2012	2012/2013	2013/2014	2014/2015	2015/2016	2016/2017
1º Ciclo - Nº de Alunos	0	126	137	130	130	114	100	86	63	56	57	52
1º Ciclo - Refeições	0	67	73	106	114	102	93	84	58	54	55	50
1º Ciclo - AEC's	0	123	133	130	130	112	100	86	63	54	57	52
Pré-Escolar - Nº de Alunos	75	72	70	64	63	48	56	49	55	43	40	40
Pré-Escolar - Refeições	60	59	54	60	59	47	45	44	51	42	37	37
Pré-Escolar Prolongamento	20	38	37	41	37	24	20	20	28	27	19	28